

from nature

GOES

ELLE
COLLECTION





About

"I closed my eyes and imagined a chair that personifies beauty. I modeled a chair whose form strictly followed function and then slowly began subtracting material and smoothing out the edges. I gradually arrived at a sleek solid wood chair that used minimal amounts of material. It still met the basic function of seating whilst retaining comfort and ergonomics."

-by Nataša Perković



Elle bar chair | Elle bar counter



ELLE CHAIR SOLID WOOD

Seat thickness 30 mm,
front view 15 mm



Standard sizes (L/W/H) 470x440x810 mm

ELLE CHAIR UPOLSTHERED

Seat thickness 50 mm,
foam thickness 15 mm

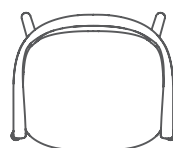
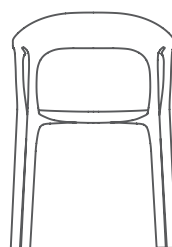


Standard sizes (L/W/H) 470x440x810 mm



ELLE CHAIR WITH ARMREST

Seat thickness 30 mm,
front view 15 mm

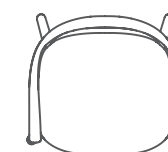
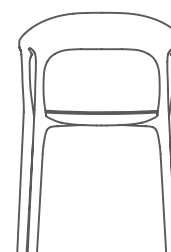


Standard sizes (L/W/H) 470x540x780 mm



ELLE CHAIR WITH ARMREST UPHOLSTERED

Seat thickness 50 mm,
foam thickness 20 mm



Standard sizes (L/W/H) 470x540x780 mm



ELLE BENCH

Board thickness 40 mm



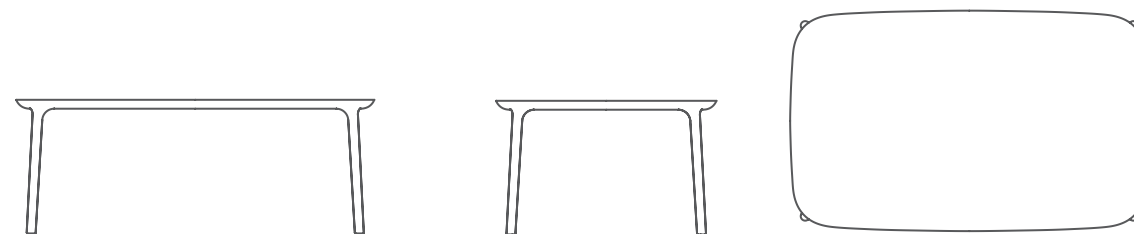
Standard sizes (L/W/H) 800x400x465 mm 1000x400x465 mm

1200x400x465 mm 1400x400x465 mm 1600x400x465 mm



ELLE TABLE

Board thickness 40 mm



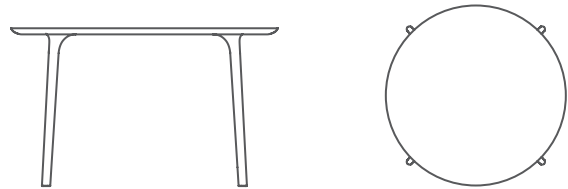
Standard sizes (L/W/H) 800x800x745 mm 1200x800x745 mm 1400x800x745 mm

1600x900x745 mm 1800x900x745 mm 2000x900x745 mm 2200x1000x745 mm



ELLE ROUND TABLE

Board thickness 20 mm



Standard sizes (L/W/H) R900 mm round R1250 mm round *more available on request



ELLE BAR CHAIR- H65

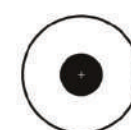


Standard sizes (L/W/H) 420x510x970 mm

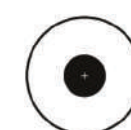


AWARDS

Elle collection is exhibited on some of the main furniture and interior fairs around the globe. It has been presented as a part of many design conventions and lactedured in many classes. It has been recognised as innovative and extraordinary product and collection which resulted in winning many awards and recognitions..



**BIGSEE
PRODUCTDESIGN
AWARDWINNER
2018**



**BIGSEE
PRODUCTDESIGN
AWARDWINNER
2018GRAND PRIX**

ambienta
Best product design 2018



**Balkan
Architectural
Biennale**



**COLLEGIUM
ARTISTICUM**



**GRAND PRIX 2017
COLLEGIUM
ARTISTICUM**



**INNOVATIVE
INTERIOR
winner**

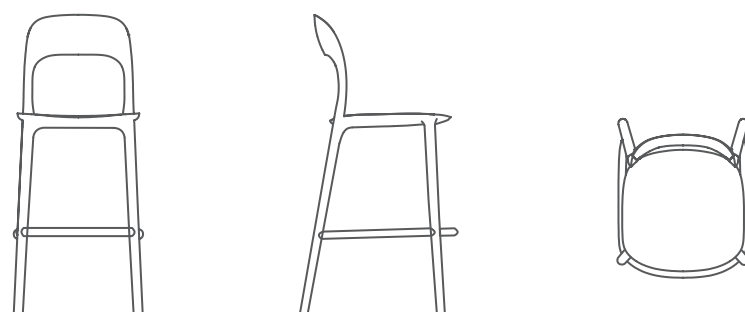


**GERMAN
DESIGN
AWARD
SPECIAL
2018**



**GGDEN
KEY**

ELLE BAR CHAIR UPHOLSTERED -H75



Standard sizes (L/W/H) 430x530x1070 mm

DESIGNER

"I love warmth, calmness, nature and innovation. In this light I create objects for people to enjoy over the course of many years."

Nataša Perković is an award-winning product designer from Sarajevo. Her products are of high aesthetic value, innovative and sustainable. Nataša holds a graduate and a postgraduate degree in product design from the Academy of Fine Arts, University of Sarajevo, where she also works as an assistant professor. She made her first professional steps at The Partners in London and at Cittadellarte - Fondazione Pistoletto in Italy. She has collaborated with the Royal College of Art Helen Hamlyn Centre for Design in London. She worked as a design associate at Kyoto Institute of Technology D-Lab.

Through her design practice, Studio Nataša Perković, she collaborates with manufacturers from Bosnia and Herzegovina and the region. She has exhibited extensively and globally.

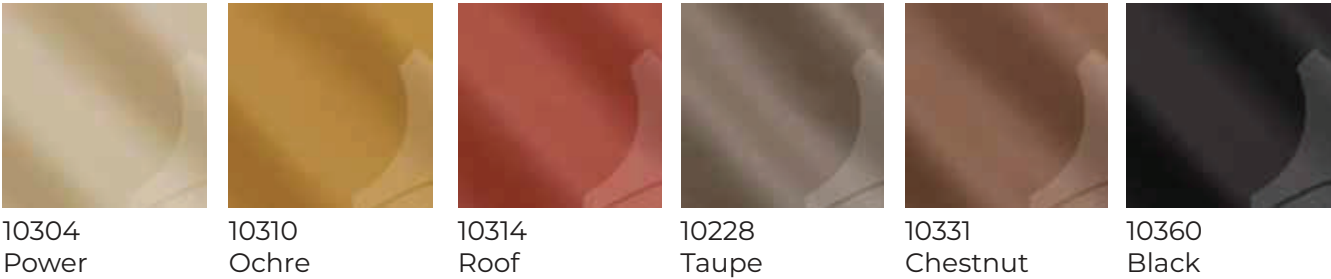


MATERIALS

WOOD



LEATHER MASTROTTO PRIMALINEA



LEATHER MASTROTTO KAIROS



LEATHER MASTROTTO LINEA

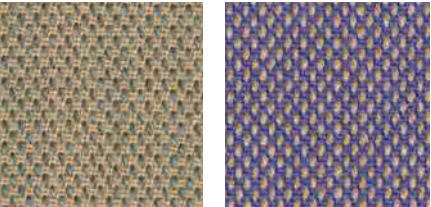


LEATHER MASTROTTO SEQUOIA



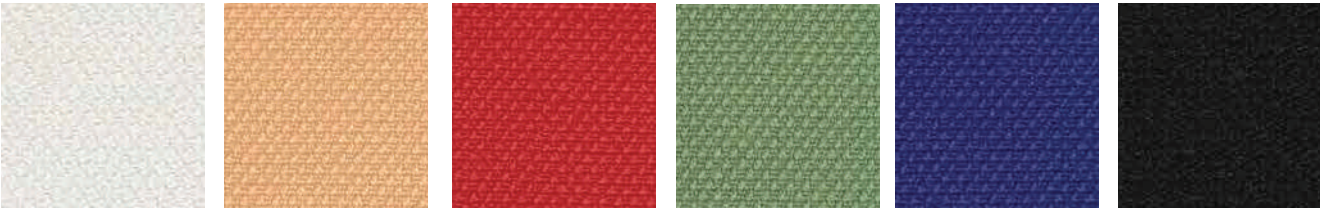
KVADRAT

Steelcut Quartet



0924 0644

Steelcut 3



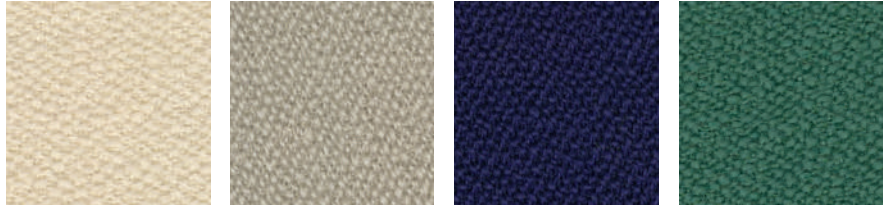
0220 0402 0552 0912 0672 0190

Divina 3 Divina Melange Divina MD



3 106 3 224 384 MD 913

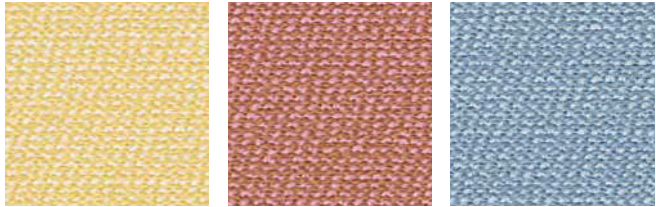
Vidar 4



1511 0146 0676 0943

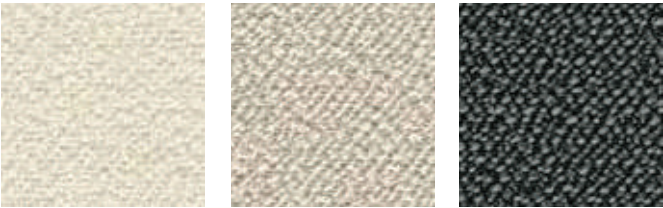
ROHI

Arco



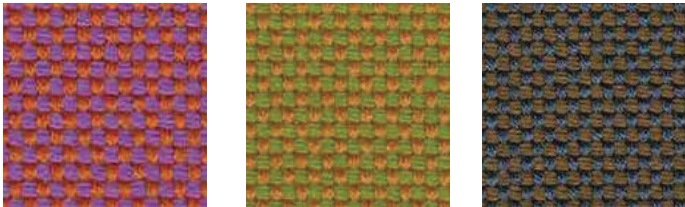
citron bloosom breeze

Sera



snow calla graphit

Novum



litch tiv oli lord



Put Famosa 38, 71000
Sarajevo
www.goes.ba